

Appendix A

Exhibits

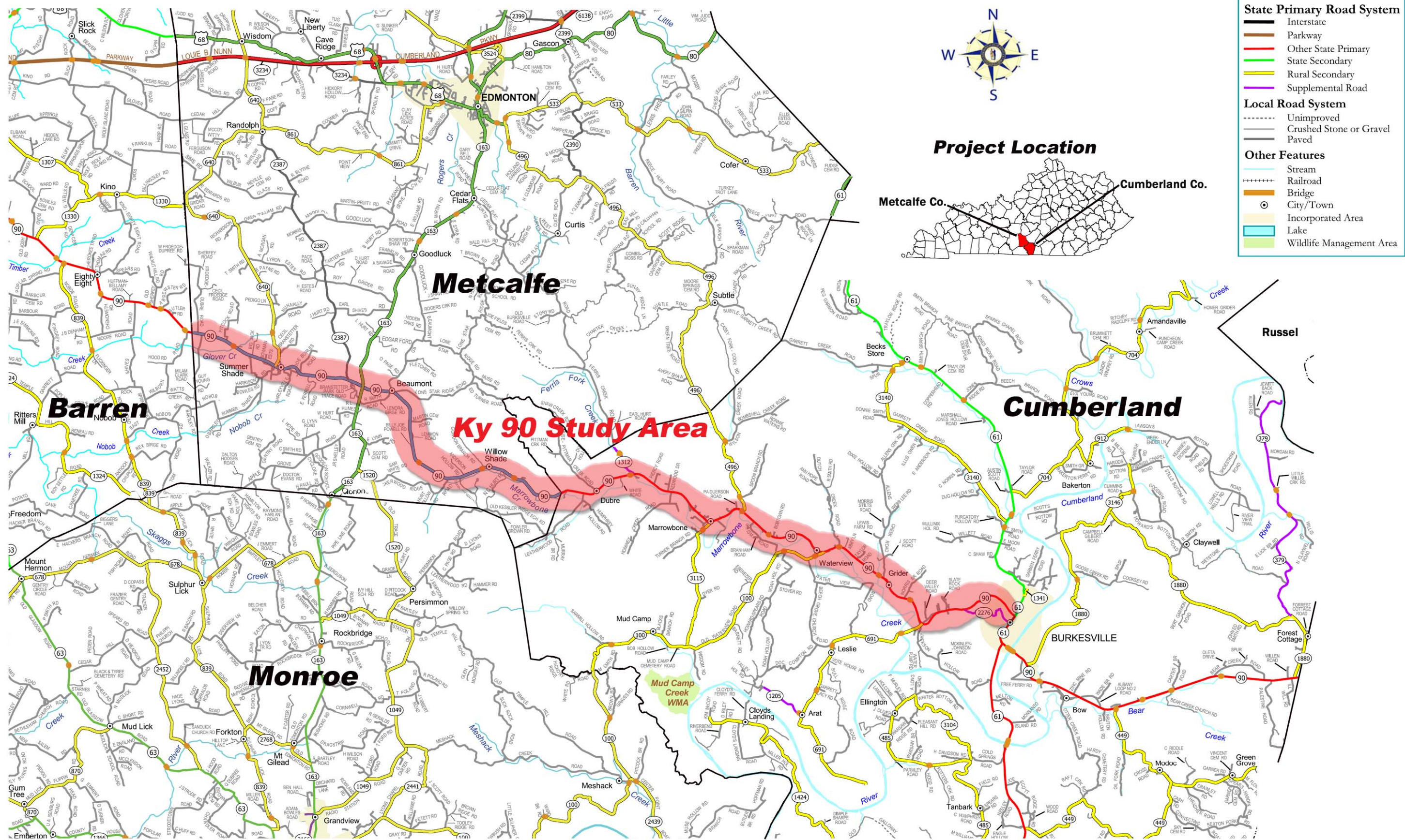
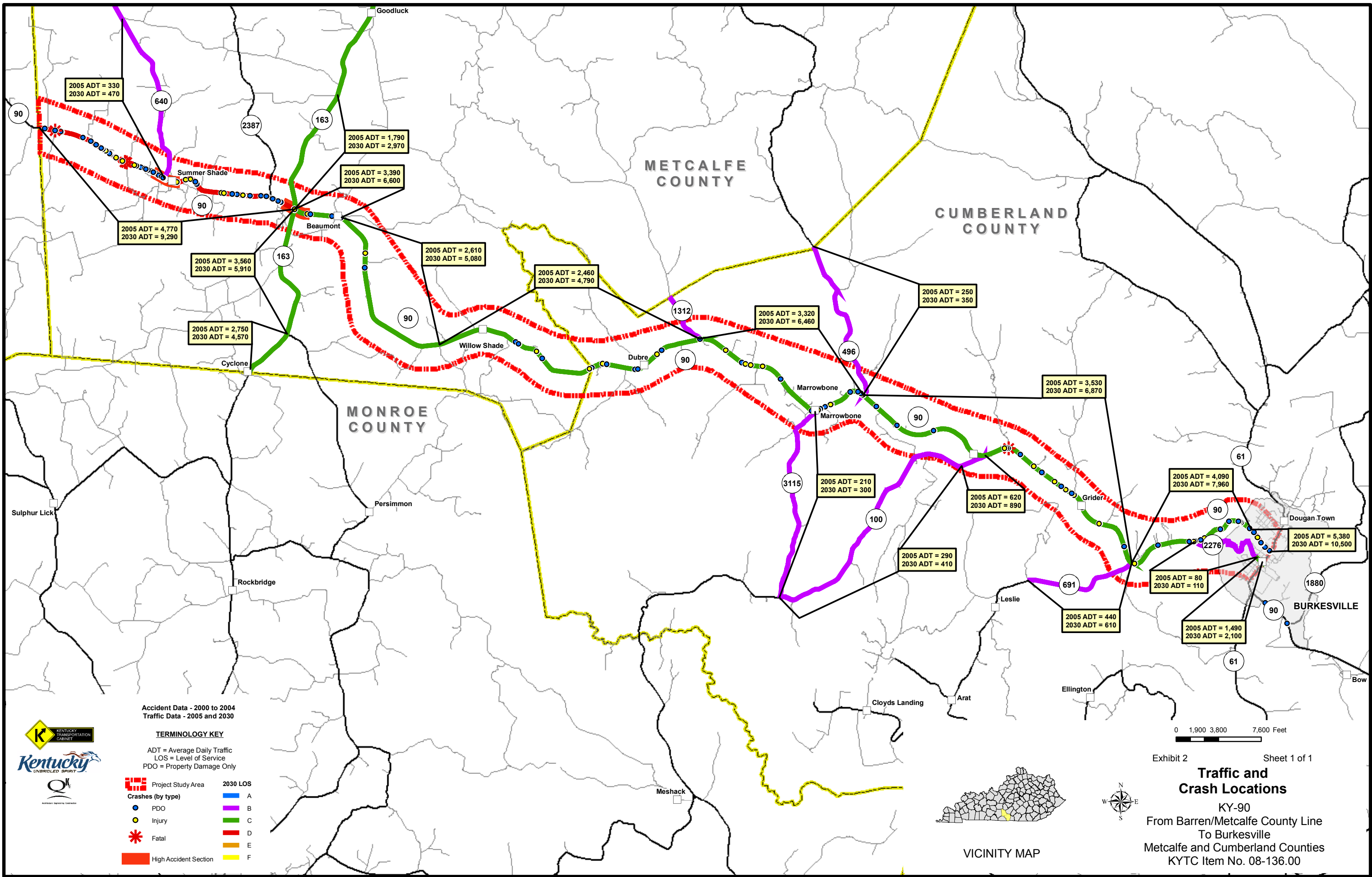


Exhibit 1
Ky 90 Study Area

Last map revision: June 2005



Division of Planning



Accident Data - 2000 to 2004
Traffic Data - 2005 and 2030

TERMINOLOGY KEY

ADT = Average Daily Traffic
LOS = Level of Service
PDO = Property Damage Only

- Project Study Area

PDO

Injury

Fatal

High Accident Section
- 2030 LOS

A

B

C

D

E

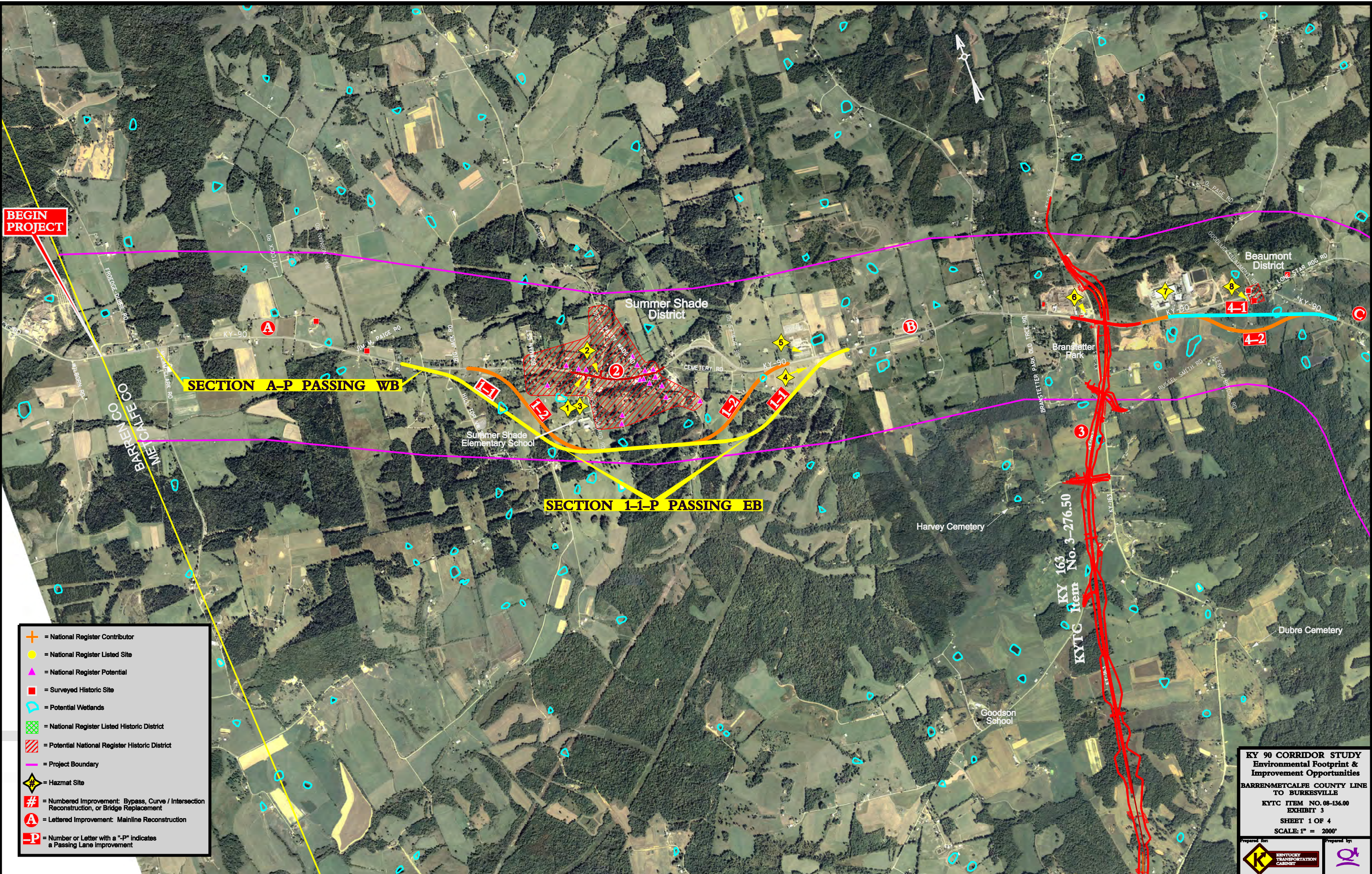
F

0 1,900 3,800 7,600 Feet

Exhibit 2 Sheet 1 of 1

Traffic and
Crash Locations

KY-90
From Barren/Metcalf County Line
To Burkesville
Metcalf and Cumberland Counties
KYTC Item No. 08-136.00



BEGIN PROJECT


SECTION A-P PASSING WB

SECTION 1-1-P PASSING EB


- + = National Register Contributor
- = National Register Listed Site
- ▲ = National Register Potential
- = Surveyed Historic Site
- ◡ = Potential Wetlands
- ▨ = National Register Listed Historic District
- ▨ = Potential National Register Historic District
- = Project Boundary
- ★ = Hazmat Site
- # = Numbered Improvement: Bypass, Curve / Intersection Reconstruction, or Bridge Replacement
- A = Lettered Improvement: Mainline Reconstruction
- P = Number or Letter with a "-P" indicates a Passing Lane Improvement

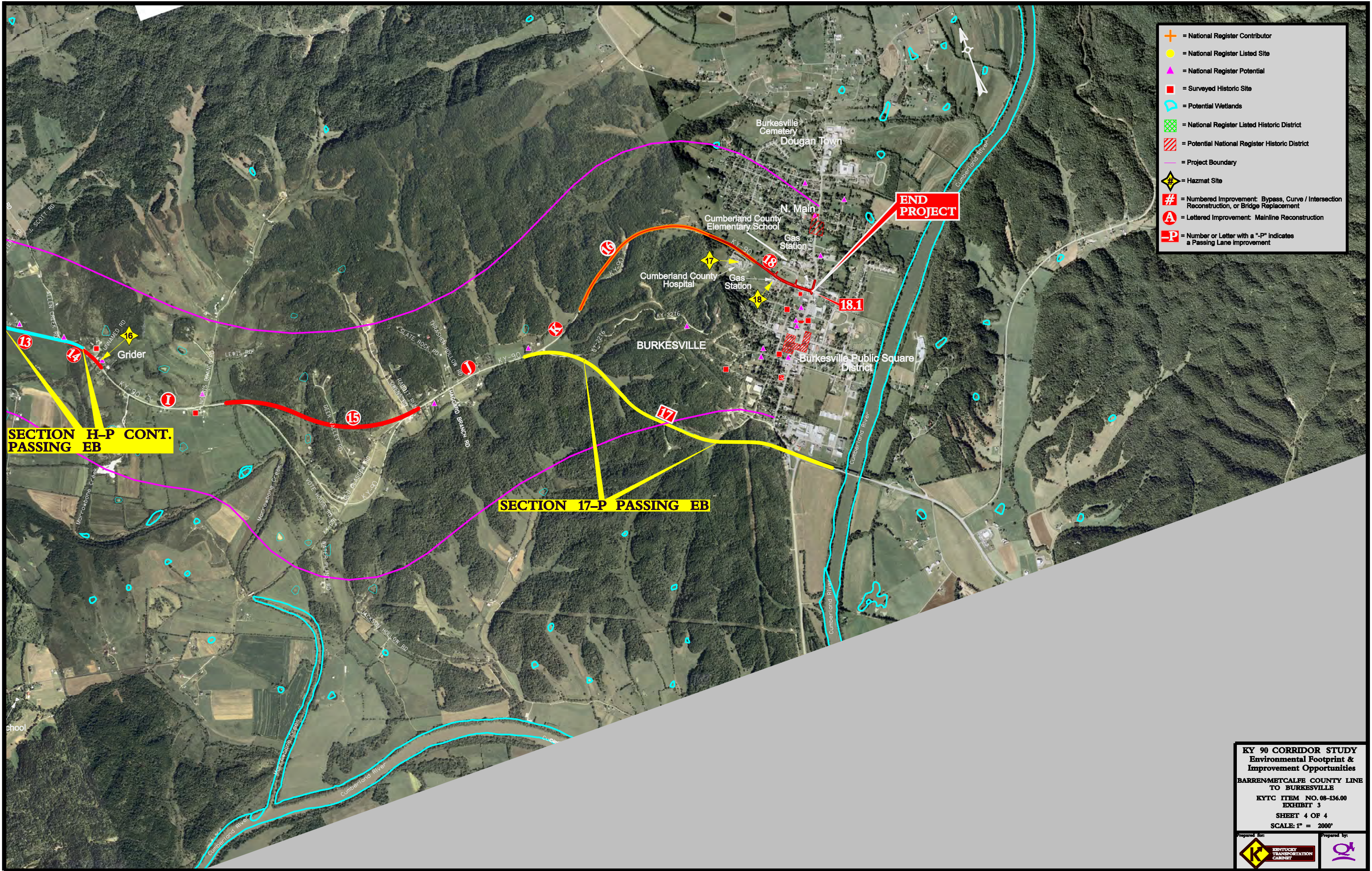
KY 90 CORRIDOR STUDY
Environmental Footprint & Improvement Opportunities
BARREN/METCALFE COUNTY LINE TO BURKESVILLE
KYTC ITEM NO. 08-136.00
EXHIBIT 3
SHEET 1 OF 4
SCALE: 1" = 2000'

Prepared for:



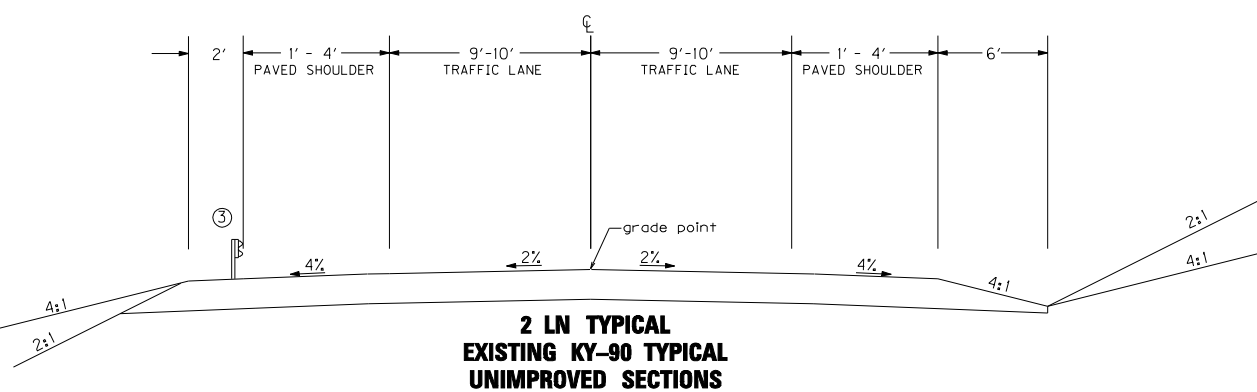
Prepared by:



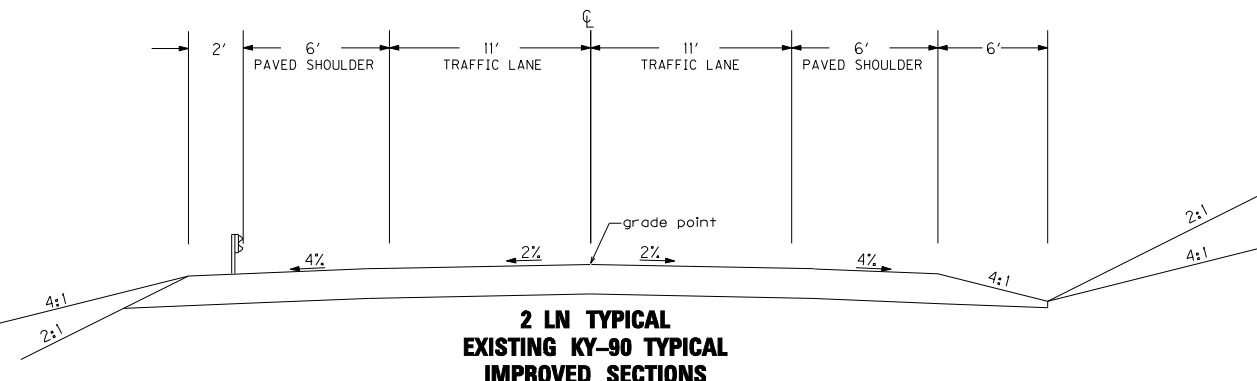


- + = National Register Contributor
- = National Register Listed Site
- ▲ = National Register Potential
- = Surveyed Historic Site
- = Potential Wetlands
- = National Register Listed Historic District
- ▨ = Potential National Register Historic District
- = Project Boundary
- ◆ = Hazmat Site
- # = Numbered Improvement: Bypass, Curve / Intersection Reconstruction, or Bridge Replacement
- A = Lettered Improvement: Mainline Reconstruction
- P = Number or Letter with a "-P" Indicates a Passing Lane Improvement

KY-90 EXISTING TYPICAL SECTIONS

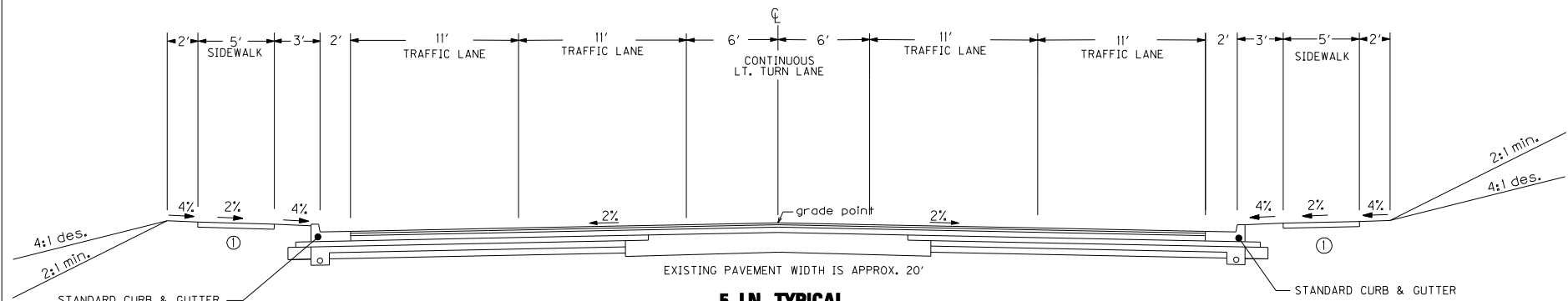


**2 LN TYPICAL
EXISTING KY-90 TYPICAL
UNIMPROVED SECTIONS**

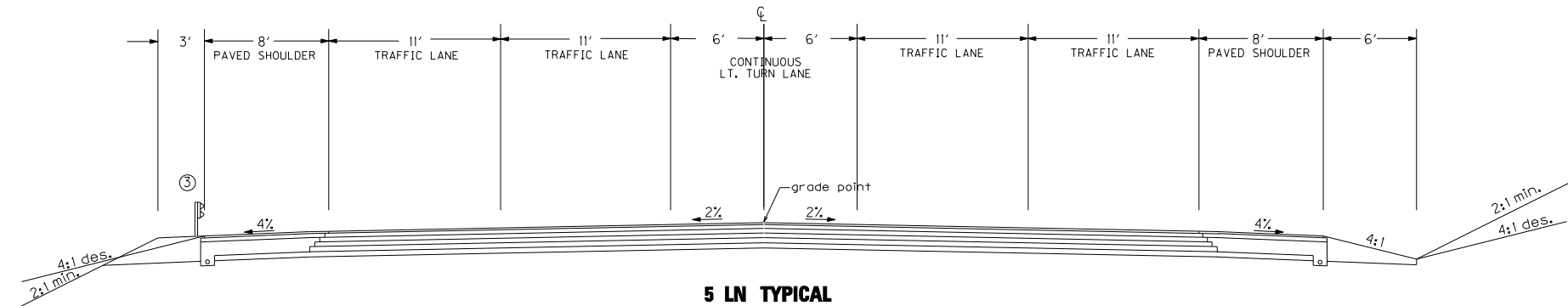


**2 LN TYPICAL
EXISTING KY-90 TYPICAL
IMPROVED SECTIONS**

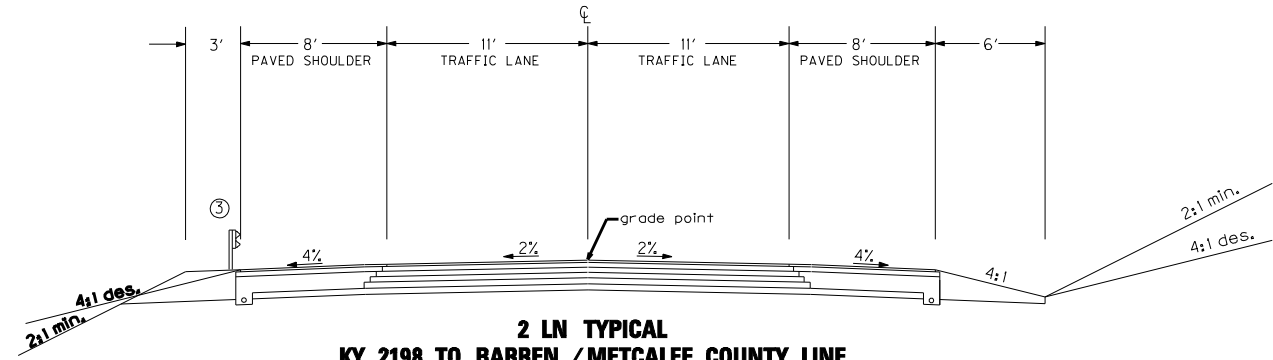
BARREN COUNTY TYPICAL SECTIONS (IN DESIGN)



**5 LN TYPICAL
LOUIE B. NUNN (CUMBERLAND) PARKWAY INTERCHANGE
TO APPROXIMATELY 2000 FT EAST OF THE LOUIE B. NUNN (CUMBERLAND) PARKWAY**



**5 LN TYPICAL
APPROXIMATELY 2000 FT EAST OF THE CUMBERLAND PARKWAY
TO KY 2198**



**2 LN TYPICAL
KY 2198 TO BARREN /METCALFE COUNTY LINE**